

# SAFETY JOGGER

## PROFESSIONAL

CLOGS

### SONIC OB

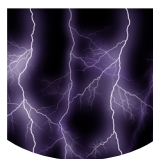
Extremely light hospital clog

Upper	Expanded EVA
Outsole	EVA
Toecap	
Midsole	
Lining	N/A
Footbed	N/A
Safety category	EN ISO 20347 - OB / ESD, A, SRC, E
Sample weight	0.160 gr.
Size range	EU 41-45/46 / UK 7.5-10.5/11.0 / US 8.0-11.5/12.0 / CM 26.5-29.5/30.0



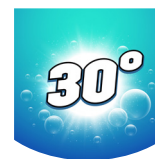
#### WATERPROOF MATERIALS

Waterproof materials make you capable of escorting patients into the shower in a safe and hygienic way.



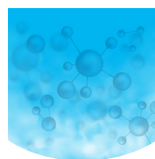
#### ELECTROSTATIC DISCHARGE (ESD)

ESD provides the controlled discharge of electrostatic energy that can damage electronic components and avoids risks of ignition resulting from electrostatic charges. Volume resistance between 100 KiloOhm and 35 MegaOhm.



#### WASHABLE 30°C

These shoes can be washed in a washing machine at 30°C.



#### CHEMICALLY & UV STERILIZEABLE

This shoe is chemically and UV sterilizeable.

**SAFETY JOGGER**  
WORKS

INDUSTRIAL PROFESSIONAL TACTICAL

WWW.SAFETYJOGGER.COM

ENGINEERED  
IN EUROPE

## SONIC OB

### Industries:

Cleaning, Medical

### Environments:

Dry environment, Uneven surfaces, Wet environment

### Maintenance instructions:

To extend the life of your shoes, we recommend to clean them regularly and to protect them with adequate products. Do not dry your shoes on a radiator, nor nearby a heat source.

	Description	Measure unit	Result	EN ISO 20347
<b>Upper</b>	<b>Expanded EVA</b>			
	Upper: permeability to water vapor	mg/cm <sup>2</sup> /h	N/A	≥ 0.8
	Upper: water vapor coefficient	mg/cm <sup>2</sup>	N/A	≥ 15
<b>Lining</b>	<b>N/A</b>			
	Lining: permeability to water vapor	mg/cm <sup>2</sup> /h	N/A	≥ 2
	Lining: water vapor coefficient	mg/cm <sup>2</sup>	N/A	≥ 20
<b>Footbed</b>	<b>N/A</b>			
	Footbed: abrasion resistance	cycles	N/A	≥ 400
<b>Outsole</b>	<b>EVA</b>			
	Outsole abrasion resistance (volume loss)	mm <sup>3</sup>	116	≤ 150
	Outsole slip resistance SRA: heel	friction	0.30	≥ 0.28
	Outsole slip resistance SRA: flat	friction	0.37	≥ 0.32
	Outsole slip resistance SRB: heel	friction	0.23	≥ 0.13
	Outsole slip resistance SRB: flat	friction	0.19	≥ 0.18
	Antistatic value	MegaOhm	14.1	0.1 - 1000
	ESD value	MegaOhm	30	0.1 - 100
	Heel energy absorption	J	36	≥ 20
<b>Toecap</b>				
	Impact resistance toecap (clearance after impact 100J)	mm	N/A	≥ 14
	Compression resistance toecap (clearance after compression 10kN)	mm	N/A	≥ 14
	Impact resistance toecap (clearance after impact 200J)	mm	N/A	≥ 14
	Compression resistance toecap (clearance after compression 15kN)	mm	N/A	≥ 14

Our shoes are constantly evolving, the technical data above may change. All product names and brand Safety Jogger, are registered and may not be used or reproduced in any format, without written consent from us.

Sample size:  
42