

AEROcase®

Emergency Bags | Emergency Backpacks

1R First Responder

EM Emergency Medical Service



The classics with a new design.
Quality makes the difference.



HUM Systems
for Life®

First Responder | Emergency Medical Service
Reliable companions for the comprehensive first aid

AEROCASE®

Emergency Bags | Emergency Backpacks

AEROCASE® - Pro

We're offering more quality and manufacturing know-how!

AEROCASE® - Pro^{1R} und Pro^{EMS} emergency bags and backpacks provide a safe transport of equipment and are reliable partners when it comes to first aid.

A compact and lightweight design allow an easy and comfortable transport which makes them the ideal companion for locations with long distances or restricted rooms.

Easy accessible outside pockets and well structured interiors allow quick access to the equipment on site while highly retroreflective reflective strips provide safety during day and night.

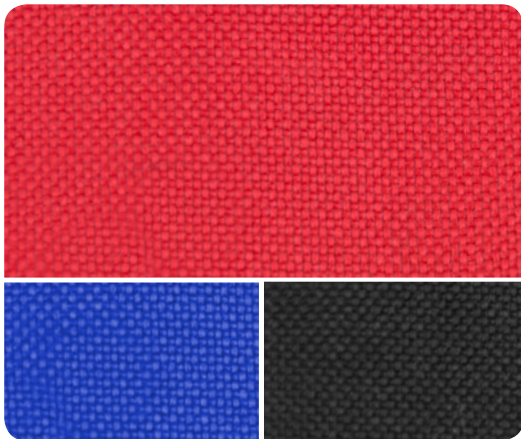
The emergency bags and backpacks are extremely durable and well equipped for high loads in everyday's use due to their high-quality materials and manufacturing process.

Versatile field of application

- Medical service
- Ambulance
- Special forces
- Civil protection
- SEG
- Companies
- Schools
- Private

AEROCASE® - Pro Material details

Materials for highest requirements and durability



AEROTEX® - PES

AEROTEX® - PES stands for high polyester 600 D (600x600).

The nylon fibers are PVC-coated on the inner surface and are extremely robust in order to give the material all necessary properties for the daily use such as tear- and abrasion resistance.

AEROTEX® - Plan

AEROTEX® - Plan is a high quality and robust tarpaulin material.

It was designed for professional use in emergency medical service especially. Due to the both-sided PVC coating, the tarpaulin material is very resistant to loads and is furthermore waterproof. It is characterized by its scratch-, tear- and abrasion resistance as well as being very hard-wearing. The surface can be cleaned with appropriate cleaners for tarpaulin material and appropriate disinfectants.



The quality in detail:

The improvements at a glance

we are happy to herby inform you about major improvements and design changes of our popular bags and backpacks from our **AEROCASE® - Pro^{1R} First Responder** as well as **AEROCASE® - Pro^{EMS} Emergency Medical Service** series.

- Improved tarpaulin material: disinfectable, tear and abrasion resistant
- Improved polyester 600 D (600x600) and nylon (smooth, soft, durable)
- High-quality stitching and product finish

- 1 Improved stiff plastic handles in black and yellow and as well the soft-padded hook-and-loop handle
- 2 Handles enforced and fastened with robust rivets
- 3 New comfortable extensions in loop shape!

- 4 Soft-padded net in back area
- 5 Slimmer fitted luminescent strips
- 6 Quality with recognition factor



* Only black model



Only HT01/03-RPL1C-...



Emergency Backpack

AEROCASE® - Pro 1R^{First Responder} PL1C Emergency Backpack L

Versatile applications, high functionality and high-quality processing qualify the Pro^{1R} PL1C for the perfect standard emergency backpack for professional use.

Flexibility and individual opportunities for organisation.

Processing details

- Eye-catching zippers for a better cognition
- Velcro straps (4 cm) for patches
- Reflective strips all around
- Transparent pocket for a good visible placement of documents and information

Professionally organized

2 front pockets

- Upper one for writing material
- The one below with plenty of space for ampoule cases | intubation cases etc.
- Additional zipper compartment for documents

2 side pockets

- Space for sphygmomanometer, stethoscope, sharps container etc.

Ergonomically formed handles

- Slip-proof comfort due to the reinforced core
- Signal colors for a better cognition



Improved yellow standard handle
- for red/blue model -



Improved black standard handle
- for black model -

The models

Dimensions: 📏 36 x 47 x 26 cm

Weight: 📖 2 kg | 3 kg

Volume: 📦 approx. 23 L



AEROTEX® - PES

AEROTEX® - Plan

More equipment details

① Clearly arranged interior concept

The modular and structured interior concept ensures a secure placement of the equipment.

- Fold-out front
- Main pocket contains removable frame with extra separating strip
- 5 module cases for the interior:
 - 3 in their corresponding divided main compartment
 - 2 can be placed inside the front pocket
- Elastic attachment straps (quality A)
- Lockable main pocket through cover flap with hook-and-loop fastener

② Comfortable carrying system

- Padded shoulder straps
- Additional quick release belts for fixation on stomach and upper body

③ Protected all around

- Dimensionally stable exterior walls
- Reinforced bottom protection of tarpaulin material
- Robust plastic pyramid feet



Net in back area

Individual organisation

- 5 modular inner bags in different sizes
- Tarpaulin - 1 color (red, blue or yellow)
- Polyester - assorted colors
- Clear window and handles



Model: Tarpaulin



Model: Polyester

Emergency bags

AEROcase® - Pro **1R** First Responder Emergency bag **S I M I L**

The AEROcase® - Pro^{1R} Emergency bags are ideal for professional first aid. It is extremely robust, durable and dimensionally stable constructed while also being equipped with wide and high quality zippers. In sizes “Small”, “Medium” and “Large” made of AEROtex® - Plan or AEROtex® - PES (polyester).

Our emergency bag series with new design! Now even of higher quality and more robust finish.



Size S

for storing small basic equipment



Size M

has additional space for expanded basic equipment



Size L

with many useful compartments, additional elastic attachment straps and large cover pocket

Processing details

- Eye-catching zippers for a better cognition
- Velcro straps (4 cm) for patches
- Reflective strips all around
- Transparent pocket for a good visible placement of documents and information

Wide velcro straps for attaching individual patches



Professionally organized

2 big side pockets

- Optional storage room

Large front pocket

- Spacious front compartment

Bottom protection

- Trough shaped bottom made of tarpaulin material
- 5 robust plastic pyramid feet
- Stability and protection



5 robust plastic pyramid feet

More equipment details size S and M

Clearly arranged interior

- Large and clear space
- Zipper compartment within the cover
- Main compartment divided into three sections
- Reasonable arrangement of elastic attachment straps (quality A):
 - within the cover
 - at the inner backside

Flexible

- Compact and space-saving design
- Multifunctional storage compartments
- Easy handling

Protected all around

- Very robust and durable
- Dimensionally stable construction



Versatile

More room for maneuver

- Delivery including shoulder strap
- Hands free for more mobility

Padded interior layout

- Protects the equipment
- Ensures order

Large transparent pocket

- A lot of space to place documents and information for easy perceptibility

Emergency bags

More equipment details size L

Professionally organized

- A lot of space for extensive equipment
- Zipper compartment within the cover
- Structured, practical interior layout
- Interior with variable dividing system
- Robust, elastic attachment straps (quality A) within:
 - Interior
 - Side pocket
 - Front pocket

Divided front pocket

- Many useful straps of different sizes and dividers
- Useful e.g. for infusion accessories, diagnostic equipment etc.

Ideal protection

- Reinforced outer walls
- Completely padded
- Protected bottom area



Variable interior

- Removable and moveable

The models

Size S

Dimensions: 📏 37 x 21 x 27 cm

Weight: 📊 0.7 kg

Volume: 📦 approx. 12 L

AEROTex®- PES



AEROTex®- Plan



Size M

Dimensions: 📏 43 x 25 x 27 cm

Weight: 📊 1 kg | 2 kg

Volume: 📦 approx. 18 L



Size L

Dimensions: 📏 52 x 32 x 32 cm

Weight: 📊 1.6 kg | 2.7 kg

Volume: 📦 approx. 28 L



AEROCASE® - Pro 1R ^{First Responder} BVM1C Emergency bag M

Emergency bag Pro^{1R} "Medium" made of AEROCASE® - PES (polyester), incl. plastic insert with variable interior design.

Now even of higher quality and more robust finish!

"Back again in our program"

Individual

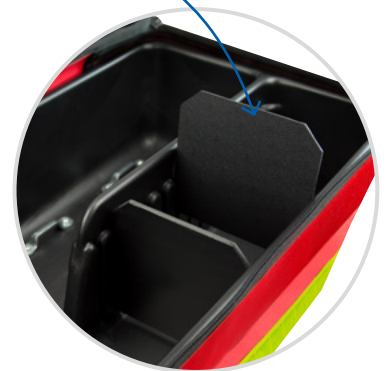
- Integrated O₂-Cylinder holder 0.8 | 1.0 | 2.0 L
- Variable divided plastic insert with 3 Partitions for individual compartment separation
- 4 color coded inner bags with straps for individual organisation - visible, portable and stable
- Inner compartment in the inside of the compartment cover/closure flap
- Large front clear window for individual labeling
- Equipped with carrying handles, a combined detachable shoulder/back strap and five plastic feet
- Bidirectional zipper
- Velcro straps (4 cm) for patches



With holder for O₂-bottle via hook-and-loop strip



Variable divided plastic insert with Partitions



Dimensions: 47 x 28 x 25 cm

Weight: 2 kg

Volume: approx. 24 L



Including 4 color coded modular bags

Emergency backpack

Now even of higher quality and more robust finish!

"Best price- / value ratio"

AEROCASE® - Pro Emergency Medical Service PXL1C Emergency backpack XL

Extremely durable emergency backpack. Designed for permanent daily use by emergency medical services. Provides safe transport of emergency equipment combined with maximum carrying convenience.

Spacious and practice-based interiors for a clearly arranged placement of substantial emergency equipment.

Processing details

- Eye-catching zippers for a better cognition
- Velcro straps (4 cm) for patches
- Reflective strips all around
- Bidirectional zipper

Professionally organized

2 Front pockets

- Interior fixing straps
- Plenty of space for large ampoule case, intubation kit, etc.

3 Side pockets

- 2 small and 1 long side pocket
- For devices such as sphygmomanometer, stethoscope, sharps container, etc.

Document compartment

- For documents incl. clipboard



The models

"From professionals for professionals."

AEROTEX® - Plan.

Dimensions:  52 x 54 x 25 cm

Weight:  5.1 kg

Volume:  approx. 55 L



Carmine red
RAL 3002



Luminous yellow
RAL 1026



Ultramarine blue
RAL 5002

More equipment details

For professional use designed interior concept

Perfectly equipped for every kind of situation.

The modular and clearly arranged interior concept allows a safe and well organized placement of large emergency equipment:

- Hinged front and center walls with numerous useful fixing straps and compartments
- Structured, two-pieced interior
- Integrated holder for:
0.8 L | 1.0 L | 2.0 L oxygen bottles
- Robust fixing strap (quality A):
 - Main compartment
 - Frame (encircling the inside)
 - Center compartment
 - Front pocket (bottom)

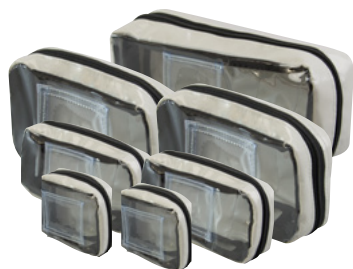


Removable back straps



Comfortable transport

- Removeable padded back straps with quick release straps for fixation on the body
- 2 ergonomic handle, on top and lateral side
- Vertically and horizontally carryable



Individual organization

- 7 Module cases in different sizes
- Transparent side and compartment
- With fastening eyes

Ideal Protection

- Hard-wearing AER0tex® - Plan
- All around padded body
- Protected bottom area
- Bidirectional zipper
- 7 robust plastic pyramid feet



AEROCASE®

Emergency bag

AEROCASE® - Pro Emergency Medical Service BVL1 Emergency bag L

Universal emergency bags for miscellaneous uses within emergency rescue services, doctors offices and other medical services.

Compact design accurately fitting:

- In trunk compartments of emergency vehicles
- In places with very limited space

Processing details

- Velcro straps (4 cm) for patches
- Reflective strips all around

Related to practice and versatile

- Completely foldable (180 °)
- Ergonomical transport possibilities:
 - Formed handle with reinforced core
 - Optional carrying strap for comfortable shouldering
- Structured, practical interior layout with numerous options for organizing



“The universal emergency bag concept!”

For example used as: pediatric emergency bag, doctors emergency bag.

Dimensions:  45 x 34 x 19 cm

Weight:  2.9 kg

Volume:  approx. 26 L

* Filling only for illustration purposes. Not included in the delivery!

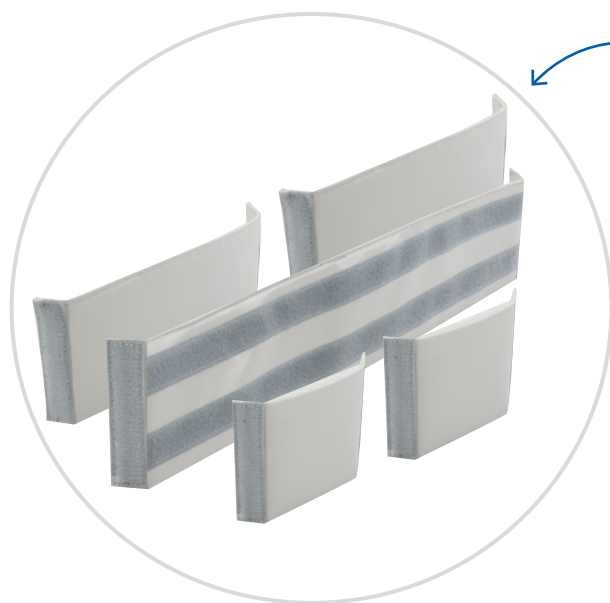


Red
RAL 3002

More equipment details

Interior-Concept for the professional utilization

- Main compartment in the bottom with variable, removable separating strips
- Fixable, removable center wall with straps, loops and compartments in the upper main compartment for an ideal organization of equipment in fixed sizes
- Main compartment in the cover including lockable compartments and fixing straps (quality A)



Customized organization made easy

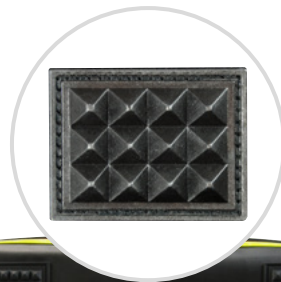


Convenient carrying

- Optional padded shoulder strap

Protected bottom and back areas

- Hard-wearing black tarpaulin material
- 9 robust plastic pyramid feet
 - 4 on the bottom area
 - 5 on the back area
- Protection from dirt, moisture and attrition
- Easy to clean and disinfect



Ampoule cases

AEROcase® - Pro  Emergency Medical Service

CAL1 Large ampoule case | CAS1 Small ampoule case

Ampoule cases for shatter-proof storage of ampoules, cannulas and syringes. The ideal addition for bags and backpacks of the AEROcase® - Pro^{EMS} and AEROcase® - Pro^{1R} series.

Ampoule case CAL1 Size L

Spacious and safe

- Holds 60 ampoules
- Removable ampoule board with professional ampoule bars and 3 elastic fixation loops
- Middle, padded wall with spacious clear windows for syringes, cannulas, etc.
- All around intergrated foam protects content from shattering
- Velcro straps on the backside for optimal storage in emergency cases
- Bidirectional zipper
- Velcro straps (4 cm) for patches



Removable
ampoule board



Dimensions:  27 x 22 x 9.5 cm

Weight:  1.2 kg

Volume:  approx. 5 L

Ampoule case CAS1 Size S

Compact space saving solution

- Holds 50 ampoules (24 x 1 ml | 14 x 1-2 ml | 7 x 5 ml | 5 x 10 ml)
- Removable separating strip
- Integrated fixation loops on both sides
- Transparent pocket for a part list
- All around intergrated foam protects content from shattering
- Velcro strips on the backside for fastening of emergency pouches
- Space saving storage in emergency bags or backpacks



Dimensions: 18 x 14 x 7.5 cm

Weight: 0.23 kg

Volume: approx. 1.8 L



Removable
separating strip

AEROcase® - Ampoule Board

Ampoule board of stable acrylic glass, with 2 ampoule bars for storage of 22 ampoules (2 x 11 ampoules).

Suitable for:
Storage in drawers

Suitable for:
Ulmer case I, II, III



Dimensions: 23.6 x 22.5 x 3.2 cm

Weight: 0.35 kg

* Filling only for illustration purposes. Not included in the delivery!

Intubation cases

AEROcase® - Pro Emergency Medical Service CIS1 | CIL1 Intubation case

Secure and compact intake of Airway Management:
AEROTube® ET-holder | Laryngoscopes | Laryngeal masks
Endotracheal tubes | Oropharyngeal tubes

Intubation case CIL1 Size L

Big, spacious intubation bag of durable AEROTex® - Plan material.

- Robust and disinfectable
- Many elastic fixation loops for fixation of intubation accessories
- Compartments for storage of endotrachealtubes and laryngeal airway masks
- Clear window for equipment list/labeling
- Velcro straps on the backside for optimal storage in emergency cases
- Bidirectional zipper
- Velcro straps (4 cm) for patches



Dimensions:  27 x 22 x 9.5 cm

Weight:  0.50 kg

Volume:  approx. 5 L



Velcro straps on the backside



Velcro strap for patches

Blue

Intubation case CIS1 Size S

Space saving rollable intubation case of durable AEROTex® - Dura (Nylon).

Well organized emergency intubation.

Processing details

High-quality nylon

- Very tear-resistant fibers
- Durabler and long lasting

Transparent pocket

- For a content list or something similar

Reflective stripes

- Highly retroreflective
- Safe during night and day

Eye-catching quick-release buckle

- Secure lock
- Easy and quick opening

Velcro strips

- Secure attachment in emergency bags and backpacks

Well prepared intubation management

- Intelligent structured interior
- Stable fixation loops (Quality A)
- Spacious, seperately closable inside pocket
- Secure and compact intake of: Laryngoscopes, blades, endotrachealtubes, etc.
- Flaps on the side prevent content from falling out
- Foldable and therefore space saving



Belt adjustable in length

- Regulation by velcro



Dimensions: 📏 30 x 16 x 4 cm

Weight: ⚖️ 0.24 kg

Volume: 🗄️ approx. 2 L



Light blue

AEROcase®

Oxygen bag

The classic model in new design
and improved concept!

AEROcase® - Pro Emergency Medical Service B0L1-B Oxygen bag L

All around padded oxygen bag with storage room for:

O₂-bottles with pressure regulator | demand valve | resuscitation bag | O₂-masks and further equipment for emergency resuscitation.

The answer for O₂-cylinders up to 5 liters.

Processing details

- Velcro straps (4 cm) for patches
- Reflective strips all around
- Padded walls for interior protection

Compact spatial wonder

- Large storage room for substantial oxygen equipment
- Main compartment with bottle holder and additional pockets
- Exterior front pocket
- Possibilities to hold: pressure regulator, demand valve, resuscitation bag, oxygen masks and further equipment for emergency resuscitation
- Clamping straps to restrict the max. opening of the bag
- Additional front bag to house small items



Velcro straps
for patches



Dimensions:  55 x 21 x 31 cm

Weight:  1.4 kg

Volume:  approx. 25 L

Easy-Access-Window



Easy-Access-Window

- Permanent option to regulate the O₂-flow via easy-access-window with hook-and-loop system
- Continuous control of oxygen level

* Filling only for illustration purposes. Not included in the delivery!



Convenient carrying

- Additional padded shoulder strap
- Fastening straps for transport at a stretcher
- Hands free for more mobility

Product overview Pro^{1R} - Emergency bags and backpacks | Inner bags sets

AEROCASE[®] - Pro^{1R} PL1C Emergency Backpack L

Item-No.	Description	Size	Material	Color	Dimensions (WxHxD)*	Weight	Volume
HT01-RPL1C-R	AEROCASE [®] - PRO ^{1R} PL1C Emergency Backpack	L	Polyester	● Red	36 x 47 x 26 cm	2 kg	approx. 23 L
HT01-RPL1C-B	AEROCASE [®] - PRO ^{1R} PL1C Emergency Backpack	L	Polyester	● Blue	36 x 47 x 26 cm	2 kg	approx. 23 L
HT01-RPL1C-BLK	AEROCASE [®] - PRO ^{1R} PL1C Emergency Backpack	L	Polyester	● Black	36 x 47 x 26 cm	2 kg	approx. 23 L
HT03-RPL1C-R	AEROCASE [®] - PRO ^{1R} PL1C Emergency Backpack	L	Tarpaulin	● Red	36 x 47 x 26 cm	3 kg	approx. 23 L
HT03-RPL1C-B	AEROCASE [®] - PRO ^{1R} PL1C Emergency Backpack	L	Tarpaulin	● Blue	36 x 47 x 26 cm	3 kg	approx. 23 L



AEROCASE[®] - Pro^{1R} Inside bag sets for Pro^{1R} PL1C Emergency Backpack L

Item-No.	Description	Material	Color
HT01-RPL1-C-SET	AEROCASE [®] - PRO ^{1R} Inner bags sets	Polyester	● 5-color
HT03-RPL1-C-SET-R	AEROCASE [®] - PRO ^{1R} Inner bags sets	Tarpaulin	● Red
HT03-RPL1-C-SET-B	AEROCASE [®] - PRO ^{1R} Inner bags sets	Tarpaulin	● Blue
HT03-RPL1-C-SET-Y	AEROCASE [®] - PRO ^{1R} Inner bags sets	Tarpaulin	● Yellow



AEROCASE[®] - Pro^{1R} BS1 Emergency Bag S

Item-No.	Description	Size	Material	Color	Dimensions (WxHxD)*	Weight	Volume
HT01-RBS1-R	AEROCASE [®] - PRO ^{1R} PL1C Emergency Bag	S	Polyester	● Red	37 x 21 x 27 cm	0.7 kg	approx. 12 L
HT01-RBS1-B	AEROCASE [®] - PRO ^{1R} PL1C Emergency Bag	S	Polyester	● Blue	37 x 21 x 27 cm	0.7 kg	approx. 12 L
HT03-RBS1-R	AEROCASE [®] - PRO ^{1R} PL1C Emergency Bag	S	Tarpaulin	● Red	37 x 21 x 27 cm	0.8 kg	approx. 12 L
HT03-RBS1-B	AEROCASE [®] - PRO ^{1R} PL1C Emergency Bag	S	Tarpaulin	● Blue	37 x 21 x 27 cm	0.8 kg	approx. 12 L



AEROCASE[®] - Pro^{1R} BM1 Emergency Bag M

Item-No.	Description	Size	Material	Color	Dimensions (WxHxD)*	Weight	Volume
HT01-RBM1-R	AEROCASE [®] - PRO ^{1R} PL1C Emergency Bag	M	Polyester	● Red	43 x 25 x 27 cm	1 kg	approx. 18 L
HT01-RBM1-B	AEROCASE [®] - PRO ^{1R} PL1C Emergency Bag	M	Polyester	● Blue	43 x 25 x 27 cm	1 kg	approx. 18 L
HT03-RBM1-R	AEROCASE [®] - PRO ^{1R} PL1C Emergency Bag	M	Tarpaulin	● Red	43 x 25 x 27 cm	2 kg	approx. 18 L
HT03-RBM1-B	AEROCASE [®] - PRO ^{1R} PL1C Emergency Bag	M	Tarpaulin	● Blue	43 x 25 x 27 cm	2 kg	approx. 18 L



AEROCASE[®] - Pro^{1R} BL1 Emergency Bag L

Item-No.	Description	Size	Material	Color	Dimensions (WxHxD)*	Weight	Volume
HT01-RBL1-R	AEROCASE [®] - PRO ^{1R} PL1C Emergency Bag	L	Polyester	● Red	52 x 32 x 32 cm	1.6 kg	approx. 28 L
HT01-RBL1-B	AEROCASE [®] - PRO ^{1R} PL1C Emergency Bag	L	Polyester	● Blue	52 x 32 x 32 cm	1.6 kg	approx. 28 L
HT01-RBL1-BLK	AEROCASE [®] - PRO ^{1R} PL1C Emergency Bag	L	Polyester	● Black	52 x 32 x 32 cm	1.6 kg	approx. 28 L
HT03-RBL1-R	AEROCASE [®] - PRO ^{1R} PL1C Emergency Bag	L	Tarpaulin	● Red	52 x 32 x 32 cm	2.7 kg	approx. 28 L
HT03-RBL1-B	AEROCASE [®] - PRO ^{1R} PL1C Emergency Bag	L	Tarpaulin	● Blue	52 x 32 x 32 cm	2.7 kg	approx. 28 L
HT03-RBL1-Y	AEROCASE [®] - PRO ^{1R} PL1C Emergency Bag	L	Tarpaulin	● Yellow	52 x 32 x 32 cm	2.7 kg	approx. 28 L



AEROCASE[®] - Pro^{1R} BVM1C Emergency Bag M

Item-No.	Description	Size	Material	Color	Dimensions (WxHxD)*	Weight	Volume
HT01-RBVM1C	AEROCASE [®] - PRO ^{1R} PL1C Emergency bag	M	Polyester	● Red	47 x 28 x 25 cm	2 kg	approx. 24 L




* Dimensions including front and side pockets

Product overview Pro^{EMS} - Emergency bags and backpacks


AEROcase® - Pro^{EMS} PXL1C Emergency Backpack XL

Item-No.	Description		Size	Material	Color	Dimensions (WxHxD)*	Weight	Volume
HT03-MPXL1C-R	AEROcase® - Pro ^{EMS} PXL1C Emergency Backpack		XL	Tarpaulin	Red	52 x 54 x 25 cm	5.1 kg	approx. 55 L
HT03-MPXL1C-Y	AEROcase® - Pro ^{EMS} PXL1C Emergency Backpack		XL	Tarpaulin	Yellow	52 x 54 x 25 cm	5.1 kg	approx. 55 L


AEROcase® - Pro^{EMS} CL1 Emergency Bag L

Item-No.	Description		Size	Material	Color	Dimensions (WxHxD)*	Weight	Volume
HT03-MBVL1-R	AEROcase® - Pro ^{EMS} PXL1C Emergency Bag		L	Tarpaulin	Red	45 x 34 x 19 cm	2.9 kg	approx. 26 L


AEROcase® - Pro^{EMS} CAS1 Small Ampoule Case S

Item-No.	Description		Size	Material	Color	Dimensions (WxHxD)*	Weight	Volume
HT03-MCAS1	AEROcase® - Pro ^{EMS} CAS1, Ampoule Case		S	Tarpaulin	Red	18 x 14 x 7.5 cm	0.23 kg	approx. 1.8 L


AEROcase® - Pro^{EMS} CAL1 Large Ampoule Case L

Item-No.	Description		Size	Material	Color	Dimensions (WxHxD)*	Weight	Volume
HT03-MCAL1	AEROcase® - Pro ^{EMS} CAL1, Ampoule Case		L	Tarpaulin	Red	27 x 22 x 9.5 cm	1.2 kg	approx. 5 L


AEROcase® - Ampoule Board

Item-No.	Description		Size	Material	Color	Dimensions (WxHxD)*	Weight	Volume
HNK01-AT2AL220	AEROcase® - Ampoule Board		-	-	-	23.6 x 22.5 x 3.2 cm	0.35 kg	-


AEROcase® - Pro^{EMS} CIS1 Intubation case S

Item-No.	Description		Size	Material	Color	Dimensions (WxHxD)*	Weight	Volume
HT02-MCIS1-B	AEROcase® - Pro ^{EMS} CIS1 Intubation case		S	Nylon	Blue	30 x 16 x 4 cm	0.24 kg	approx. 2 L

AEROcase® - Pro^{EMS} CIL1 Intubation case L

Item-No.	Description		Size	Material	Color	Dimensions (WxHxD)*	Weight	Volume
HT02-MCIL1-B	AEROcase® - Pro ^{EMS} CIL1 Intubation case		L	Tarpaulin	Blue	27 x 22 x 9.5 cm	0.50 kg	approx. 5 L

AEROcase® - Pro^{EMS} BOL1-B Oxygen Bag L

Item-No.	Description		Size	Material	Color	Dimensions (WxHxD)*	Weight	Volume
HT03-MBOL1-B	AEROcase® - Pro ^{EMS} BOL1, Oxygen Bag		L	Tarpaulin	Blue	55 x 21 x 31 cm	1.4 kg	approx. 25 L

* Dimensions including front and side pockets